



RSWF5-PCB | RKWF5-PCB

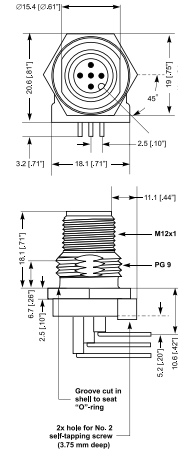


## DeviceNet Receptacles, M12 PCB

### 5-Pole, Male

DeviceNet, 5-pole, male M12 receptacle, 90° PCB mount, PG9 panel cut-out.

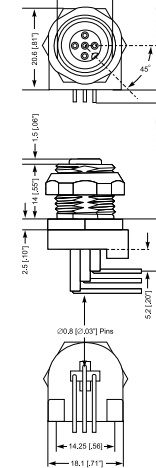
### RSWF5-PCB



### 5-Pole, Female

DeviceNet, 5-pole, female M12 receptacle, 90° PCB mount, PG9 panel cut-out.

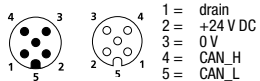
### RKWF5-PCB



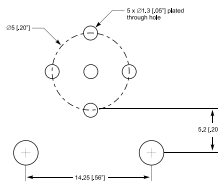
## Pin Assignments

### Face Views, M12

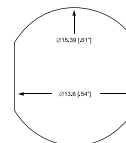
#### 5 pole



### Recommended PCB Pattern



### Recommended Panel Cutout





Be Certain with Belden

**DeviceNet Receptacles, M12 PCB**

RSWF5-PCB | RKWF5-PCB

**Technical Data**

**Environmental**

Degree of protection IP 67 / NEMA 6P  
 Operating temperature range -25°C (-13°F) / +90°C (+194°F)

**Materials**

Contact Solid, machined brass  
 Gold over nickel plating per DN specifications  
 Insert RSWF 5-PCB: Nylon, black  
 RKWF 5-PCB: PUR, black  
 Shell Brass, nickel plated  
 Coupling nut Brass, nickel plated

**Mechanical**

O-ring viton  
 PCB mount 5-pin insertion with hole for  
 2 self-tapping screw in base

**Electrical**

Current rating 4A  
 Voltage rating 250 V

Part Number		Pins	Characteristics
Male	Female		
RSWF5-PCB		5	
	RKWF5-PCB	5	